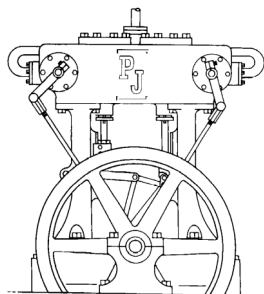
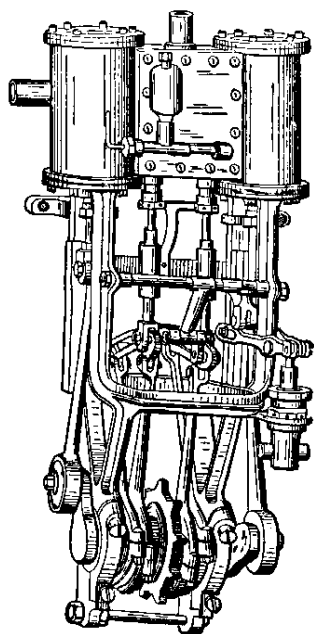


19TH ANNUAL N.E.M.E.S. MODEL ENGINEERING SHOW

FEBRUARY 28, 2015

10:00 AM TO 4:00 PM

BOOT COTTON MILL, LOWELL NATIONAL PARK



SEE OPERATING SCALE:

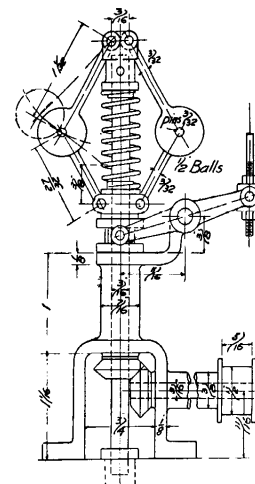
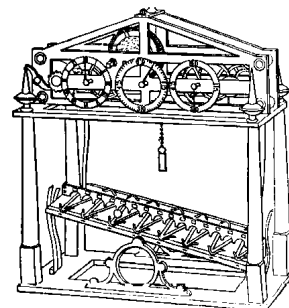
- ◆ STEAM ENGINES
- ◆ AIRCRAFT ENGINES
- ◆ STIRLING CYCLE ENGINES
- ◆ CLOCKS
- ◆ MACHINISTS TOOLS AND FIXTURES
- ◆ LOCOMOTIVES
- ◆ TRACTION ENGINES
- ◆ MODEL BOATS - STEAM AND GAS

AND MEET THE CRAFTSMEN
WHO BUILT THEM.

EXHIBITORS SETUP STARTS AT 8:00 AM
COMPRESSED AIR FOR RUNNING MODELS

NON-MEMBER EXHIBITORS WELCOME

Show at the Boot Mill, Lowell National Park
115 John Street, 4th Floor, Lowell, MA
Parking at 75 John Street, Lowell, MA



NEW LOCATION - Directions - Take Interstate 495 to Route 38 North. Follow Route 38 towards Lowell for 2 miles, and turn left on E. Merrimack St. Drive 1/2 mile and turn right on John St. The parking garage will be one block down on the right. When you walk out of the parking garage, turn right towards French Street. Walk down John Street past the guard shack and over the bridge. Turn right in the mill courtyard, and walk to the end, 115 John Street. Enter the doors and take the elevator to the 4th floor.

FOR MORE INFORMATION
see <http://www.neme-s.org>