

# *The* **NEMES** NEW ENGLAND MODEL ENGINEERING SOCIETY INC. *Gazette*

No 284

February 2020

©2020 NEMES

## **Gazette Staff**

Editor Bob Timmerman

## **NEMES officers**

President Dan Eyring

Vice President Victor  
...Kozakevich

Treasurer Richard Baker

Secretary Todd Cahill

Webmaster James  
Scheffler III

NEMES web site

<http://www.neme-s.org>

## **Contact Addresses**

Dan Eyring President  
[deyring2017@outlook.com](mailto:deyring2017@outlook.com)

Richard Baker: Treasurer  
[treasurer@neme-s.org](mailto:treasurer@neme-s.org)

Publisher  
[Publisher@neme-s.org](mailto:Publisher@neme-s.org)

Bob Timmerman: Editor  
[editor@neme-s.org](mailto:editor@neme-s.org)

Dan Eyring::Program  
[deyring2017@outlook.com](mailto:deyring2017@outlook.com)

## **February Meeting**

The February Meeting will be held at 6:30 PM at the Metropolitan Waterworks Museum. This is earlier, and at a different location than our usual meetings. It will require car pooling. See details on page 2.

## **Contents**

Date/Time of February Meeting	1
Club Business	2
President's Corner	2
Report on January Meeting	2
From the Editor's Desk	2
Future NEMES Meetings	2
NEMES Model Engineering Show	3
Note from Show Hospitality Committee	4
Additional Future Events	4
Used machinery for Sale / Wanted	4



## Club Business

Rich Baker



From the  
Editor's Desk

Bob  
Timmerman

**Dues.** We are now collecting 2020 dues. Please bring your \$25 check to the February meeting, or you can try out our credit card system. Or mail a check to Rich Baker, NEMES, 288 Middle Street, West Newbury, MA 01985.

See Rich Baker for the NEMES merchandise.



### President's Corner Dan Eyring

Dan does not have a column this month, but we are keeping this space open for him

### Report on January Meeting

In an unscheduled change of plans, necessitated by the inability of the scheduled speaker to attend, NEMES Bob Timmerman gave the talk he was scheduled to give in February, on steam engines and turbines. He went into some detail on later designs of steam engines, and the early development of the steam turbine. One surprising fact he uncovered in preparing for the talk was that based on rpm, railroad locomotives would be considered high speed engines.

My contribution to this issue is pretty slim. Those of you who were at the January meeting found out that the back wall of the house next door collapsed at 10 PM on January 1. The Boston Building Department evacuated my and my wife Nancy as a precaution. I am writing this on January 22, and we are still out of the house. I come back for several hours a day to pick up the mail and feed the cat, but we are still not in the house. I am grateful to Dan Eyring for picking up the slack.

However, I have been able to put some effort into getting a Gazette out, even under trying circumstances. Some of you Members have been doing a lot in your shops, and let us know about that at NEMES meetings. How about taking the time to write some of this up for the Gazette?

### Future NEMES Meeting Topics

#### February Program

The Executive Director of the Metropolitan Waterworks Museum has graciously invited NEMES members for a special tour of the Waterworks.

**Note the shortage of parking** – I strongly recommend that members meet up at the Charles River Museum parking lot and carpool over to the Waterworks to minimize the number of vehicles looking for a parking space.

**And yes, the tour is starting earlier than we are used to having our meetings.** The Waterworks

Museum Director plans to set up two tour groups of no more than ten or a dozen each. I propose that one group consist of early arrivers and the other consist of later arrivers. Don't worry, everybody who shows up will get the full tour!

Dan:

Thursday evening, February 6 would be fine. A 6:30-6:45pm start would be great. I'll arrange for a couple of guides, in the event we have 20 attendees (we like to tour 10 at a time). Given that this is an esteemed group, we will allow you access to areas that the public usually cannot visit! You should know that we only have about 20 parking spaces, so car-pooling is encouraged. Be sure to advise your attendees that it can be chilly in our Engine Hall so dress warmly. If you can confirm the number of attendees as we get closer to the tour date, that would be helpful.

I think it's going to be great fun to have your group visit: we are all looking forward to it!

Regards,

*Eric Peterson*

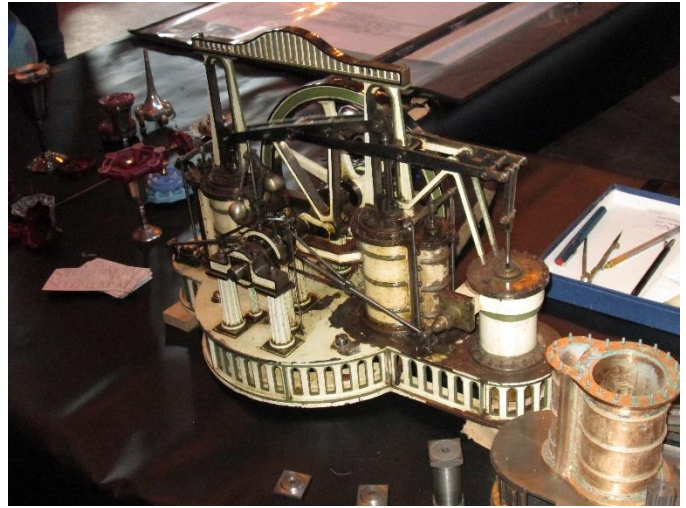
Executive Director  
Metropolitan Waterworks Museum  
2450 Beacon St., Chestnut Hill, MA 02467  
617 277-0065 ext. 13

## Future Events

**Feb 15 NEMES Model Engineering Show**  
10AM—4 PM Charles River Museum of Industry and Innovation, 154 Moody St, Waltham, MA. This is the annual chance for Members to show off their skills in building models of long-ago machinery, and of recent machinery. Bring your models and other display items to the Charles River Museum of Industry on February 15, and display them. This is a good show, invite your friends to see it.

Normal Museum admission applies, free admission for exhibitors. One more reason to exhibit.

Here are some photos of last year's show:



One of Todd Cahill's engine models



Dick Koolish with some of the blacksmith work he does



Rollie Gaucher holding forth on model building

## Notes from Show Hospitality Committee

The Hospitality Committee for the Model Engineering Show would like to ask NEMES members to bring baked goods to sell at the refreshment table at the show.

## Additional Future Events

We have no events listed at this time. People are probably planning events for the Spring and Summer. Please send them either to me, or to our Webmaster, James Schelffler. Both of our addresses are on the masthead.

## Machinery for Sale/Wanted

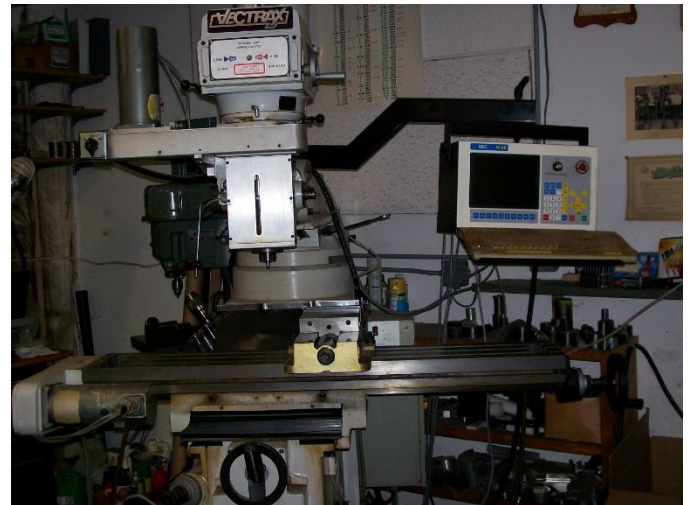
This listing is continued from last month, due to amount of machinery for sale. We have a lot of machinery for sale: Scott Acorn, a friend of Rolly Evans, is selling off his machine shop, as he is around 80 years old. Scott lives in Plympton, His phone number is 781-585-9018, his e-mail is [sacorn@hotmail.com](mailto:sacorn@hotmail.com).

The following is a list of equipment, pictures follow:  
[editor's note: To save space in the Gazette, I am

using our standard two column format for the photos. Anybody needing larger photos can contact me, and I will send you a full-size photo via e-mail]

Vectrax 3 axis CNC turret mill, w Accu Pro Gold Vise  
Bridgeport w j head and readouts  
Benchtop die sinker EDM w readouts  
4 Axis Fanuc wire EDM  
Boyar-Shultz surface grinder (hand feed) 6 x 12 with Walker chuck  
MSC surface grinder 6 x 18 (hand feed or hydraulic)  
ENCO 16" vertical band saw w blade welder  
ENCO lathe with 3 and 4 jaw chucks and collets  
Small sandblaster (no photo)  
Heat Treat Oven (no photo)  
Micrometers—0" to 16" (no photos)  
Various small tools including rotary table (photo of rotary table and x-y table)

Here are the pictures Scott sent me:



Vectrax 3 Axis CNC Milling Machine





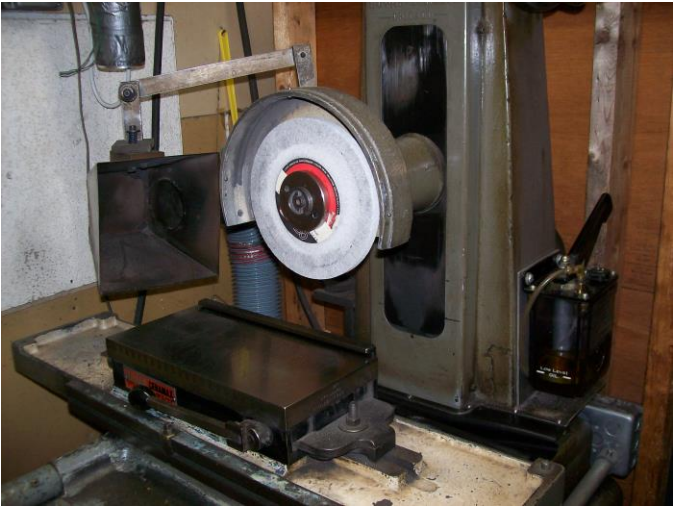
Bridgeport with J head and readouts



Fanuc 4 axis Wire EDM



Benchtop die sinker with readouts



Boyar Shultz surface grinder with Walker chuck



MSC Surface grinder



Enco Lathe with 3 and 4 jaw chucks and collets



Enco Band Saw with blade welder



Rotary table and xy table



Unknown

Contact Scott for further information.